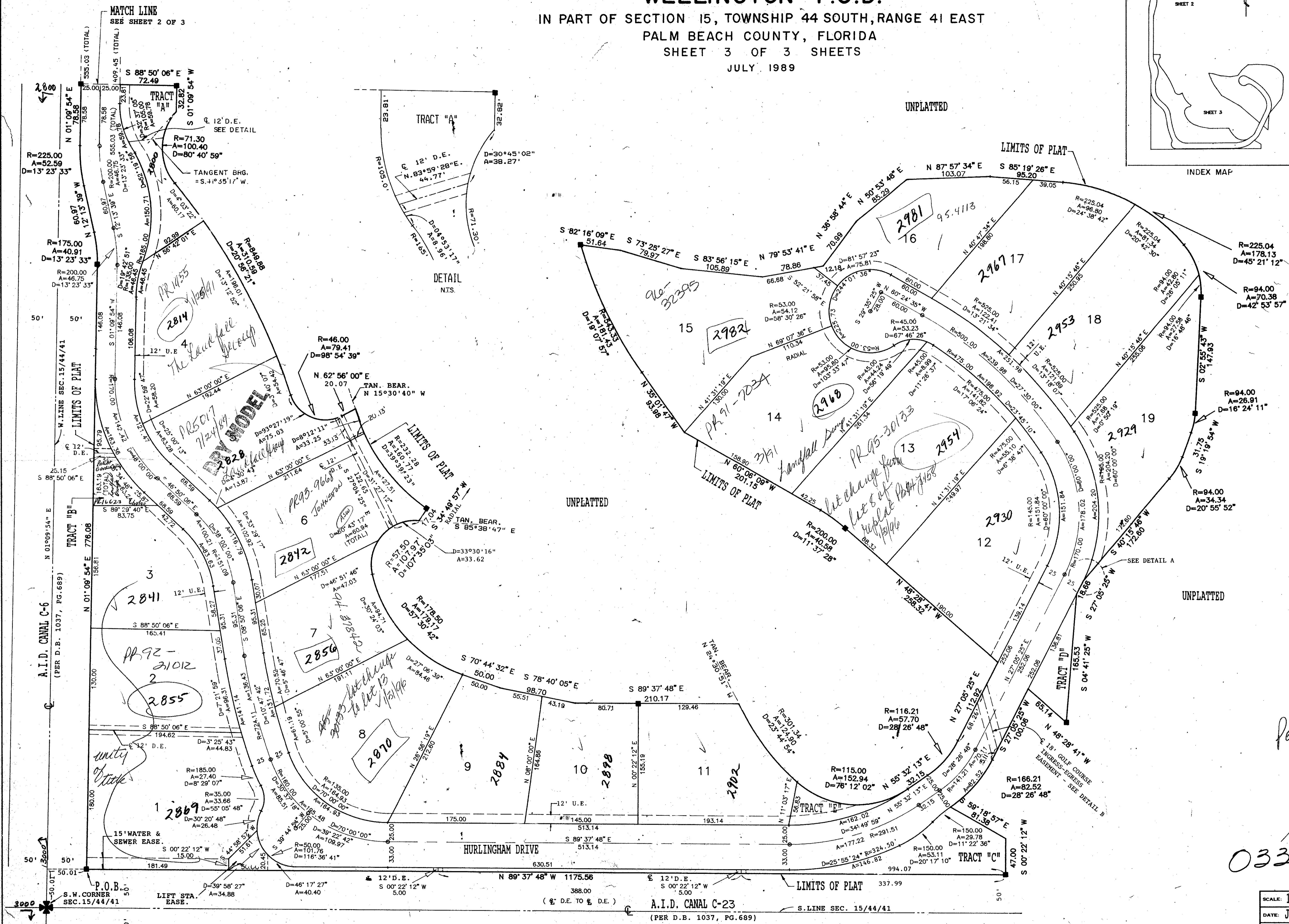
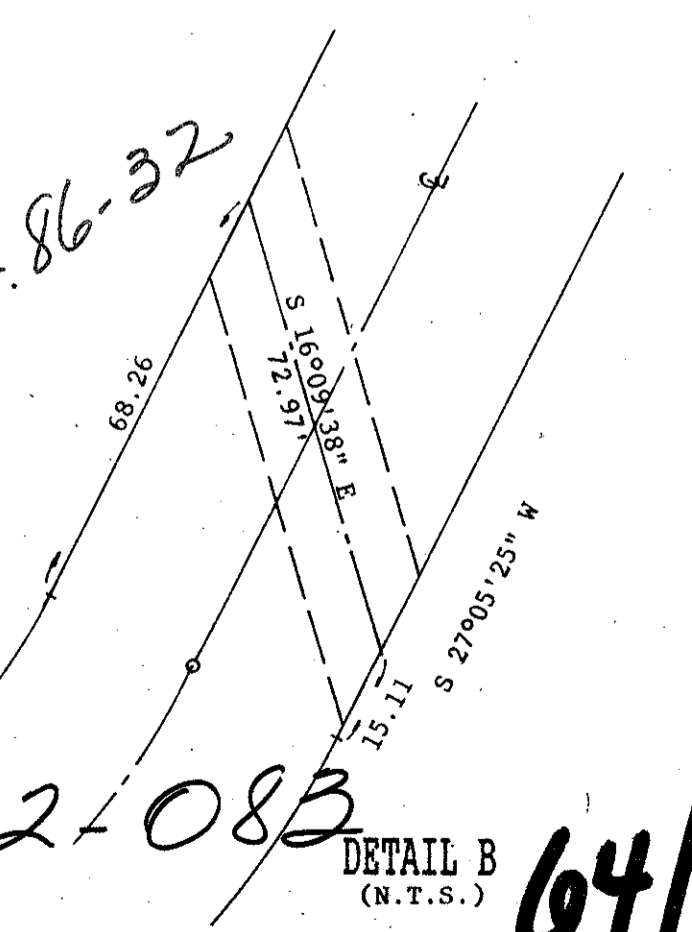
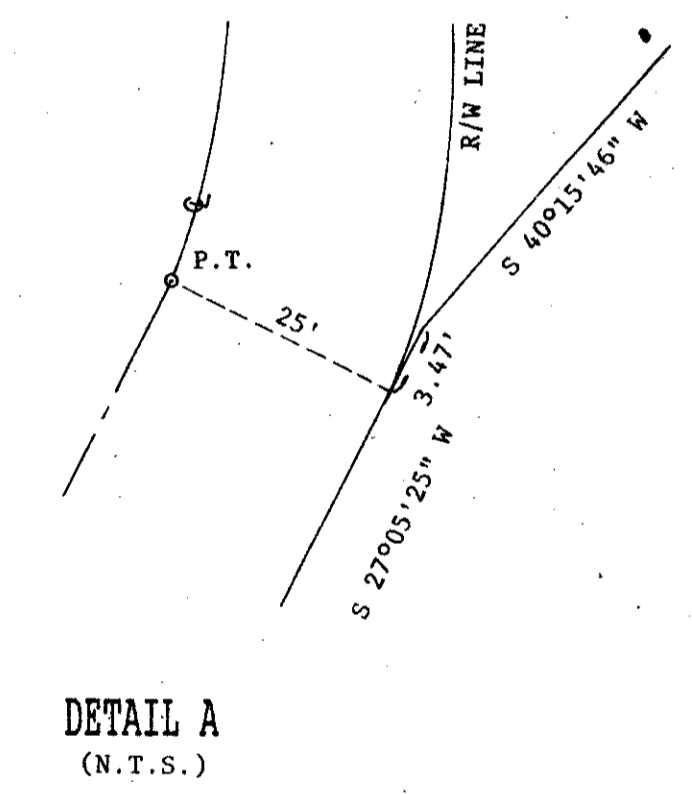
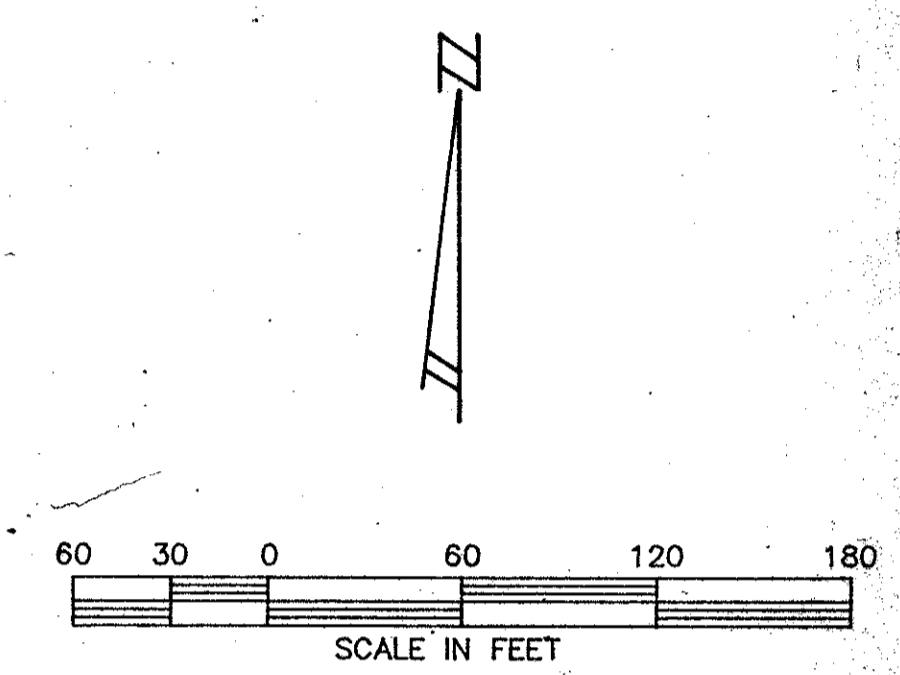
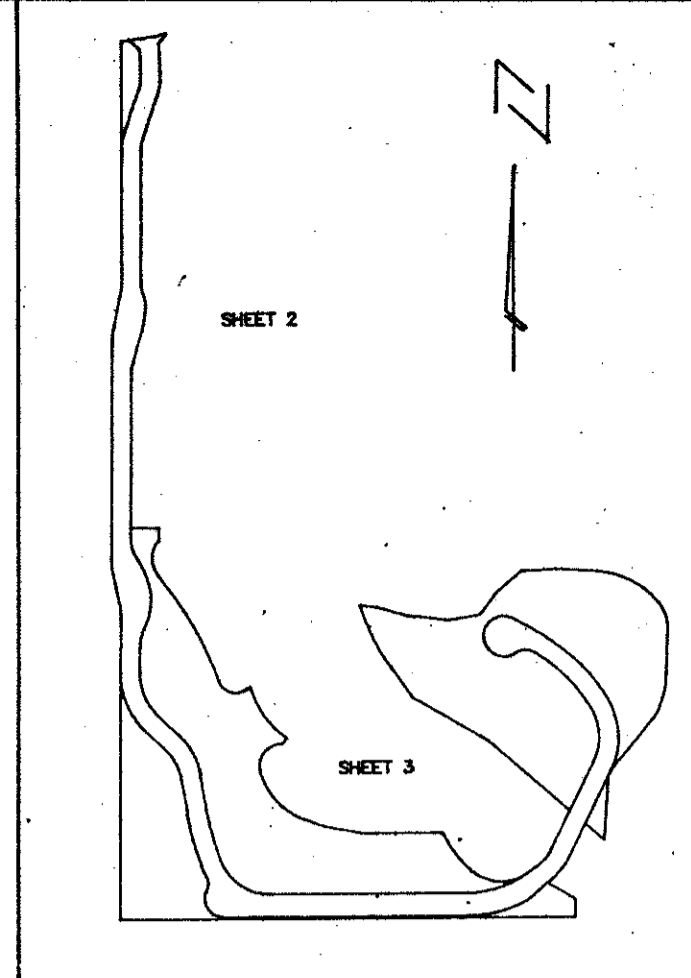


BRIDLE PATH OF PALM BEACH POLO AND COUNTRY CLUB WELLINGTON - P.U.D.

IN PART OF SECTION 15, TOWNSHIP 44 SOUTH, RANGE 41 EAST
PALM BEACH COUNTY, FLORIDA
SHEET 3 OF 3 SHEETS
JULY 1989

0332-083

90



BRIDLE PATH OF PALM BEACH POLO AND COUNTRY CLUB
 SUBDIVISION # 1
 BOOK 64 PAGE 90
 FLOOD MAP # 1003
 ZONING AR
 QUAD # 62
 SE 86-32
 ZIP CODE 33414
 PUD NAME Wellington - PUD
 TAZ 720

0332-083

64/90

SCALE: 1"=60'	NICK MILLER, INC. Land Surveying Planning & Development Consultants	DRAWN BY: CHK
DATE: JULY 1989	BRIDLE PATH OF PALM BEACH POLO AND COUNTRY CLUB WELLINGTON - P.U.D.	
2560 RCA Blvd., Suite 105 Palm Beach Gardens, Florida 33410 (407) 627-5200		DRAWING NUMBER 89045